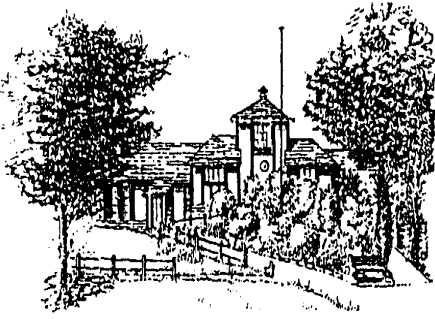


# MOBBERLEY PARISH COUNCIL



Rajar Building  
Town Lane  
Moberley  
Tel: 01565 872333  
Email: Clerk@moberleyparishcouncil.co.uk  
www.moberleyparishcouncil.co.uk

## **Planning Meeting Agenda** **Monday 17<sup>th</sup> July 2023 at 19:00**

I hereby give notice that the next **Planning meeting** of the Parish Council is planned for **19:00 Monday 17<sup>th</sup> July 2023**. Should you have any questions please submit them to the clerk by **Thursday 13<sup>th</sup> July 2023**. The Meeting will be conducted by the Planning Committee chair Cllr. Gilks or in her absence a chair will be nominated for the meeting.

If you have any concerns with the below listed planning applications you can contact Cheshire East Planning via their portal / letter/ [planning@cheshireeast.gov.uk](mailto:planning@cheshireeast.gov.uk) and record your views.

1. Apologies for absence:
2. To note any declaration of interest (if any)
3. To approve and sign the minutes of Planning Meeting 21<sup>st</sup> June 2023
4. Parishioners question time (**5 Mins per question**)
5. To discuss and comment on the following applications:

<b>Planning No.</b>	<b>Location</b>	<b>Decision</b>
<b>21/3100M</b>	<b>Outline planning permission with some matters reserved - Residential development of up to 225 dwellings and a building for Class F2 use (with access considered). New Plans Uploaded. Land East Of, LONGRIDGE, KNUTSFORD</b>	
<b>21/6219M</b>	<b>Demolition of Existing Buildings and Erection of 2No New Detached Dwellings New Plans submitted. Meadow Cottage, DAVENPORT LANE, MOBBERLEY, WA16 7NB</b>	

Next meeting: ...21<sup>st</sup> August 2023, 7pm.....

Signed.....Kate Marsh (Clerk).....